

FPBGSA Board Meeting - 15 April 21

Item 4F- Draft Sustainable Management Criteria

• SMC Matrix

• Stakeholder Discussion / Input on Draft SMC



Lowering
GW Levels



Reduction
of Storage



Seawater
Intrusion



Degraded
Quality



Land
Subsidence



Surface Water
Depletion



DBS&A
Daniel B. Stephens & Associates, Inc.

*These Powerpoint slides should be considered preliminary.
Additional slides may be added or existing slides edited or
deleted prior to the Board meeting on April 15, 2021.*

SMC	Undesirable Results	Metric	MT	MO	Summary	Comments
GW Elevation	Loss of ability to pump GW	GW elevation	WL declines below the base of well screens in more than 25% of representative wells	GW levels at 2011 high WL		maximizes range between MT and MO
GW Storage Reduction	inadequate GW storage to last through multi-year drought without GW extraction limitations	GW elevation	*WL declines below the base of well screens in more than 25% of representative wells	GW levels at 2011 high WL		maximizes range between MT and MO
SW Depletion	Surface water flow declines due to GSP implementation that interfere with the beneficial use and users	Rising GW rates at the Fillmore-Piru basin boundary (Fish Hatchery) / Depth to GW at the Fillmore-Piru basin boundary	The GSP does not propose projects or management actions that would change the operational regime of the basins. Therefore, implementation of the GSP does not cause significant and unreasonable effects. No beneficial users or uses are materially impacted by implementation of the GSP.			
Land Subsidence	Land subsidence amounts that interfere with infrastructure operations	*Subsidence rates / quantity	*Total inelastic subsidence of 1.2 in/yr (0.1 ft/yr) or 0.6 ft over 5 yrs	Inelastic subsidence rates within +/- 0.05 ft/yr as determined by InSAR		Monitor subsidence amount - InSAR data from DWR; trigger at GW elevation lower than the estimated historical low
Degraded WQ	Water quality degradation that impairs the beneficial use of the resource	WQ values	Water quality parameters established in existing or future regulations	FPBGSA is not a water purveyor and lacks regulatory authority for WQ compliance, but will cooperate with appropriately empowered entities		
Seawater Intrusion	NA	NA	NA	NA		

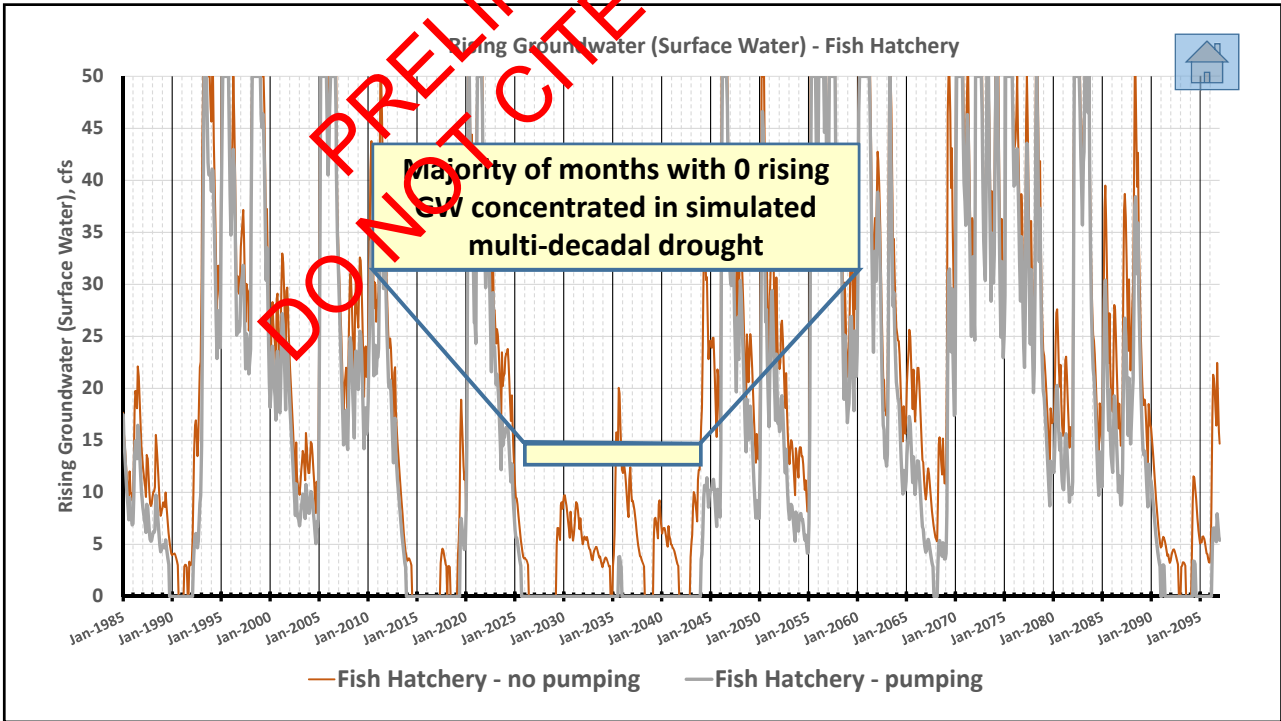
Surface Water - Groundwater Interaction

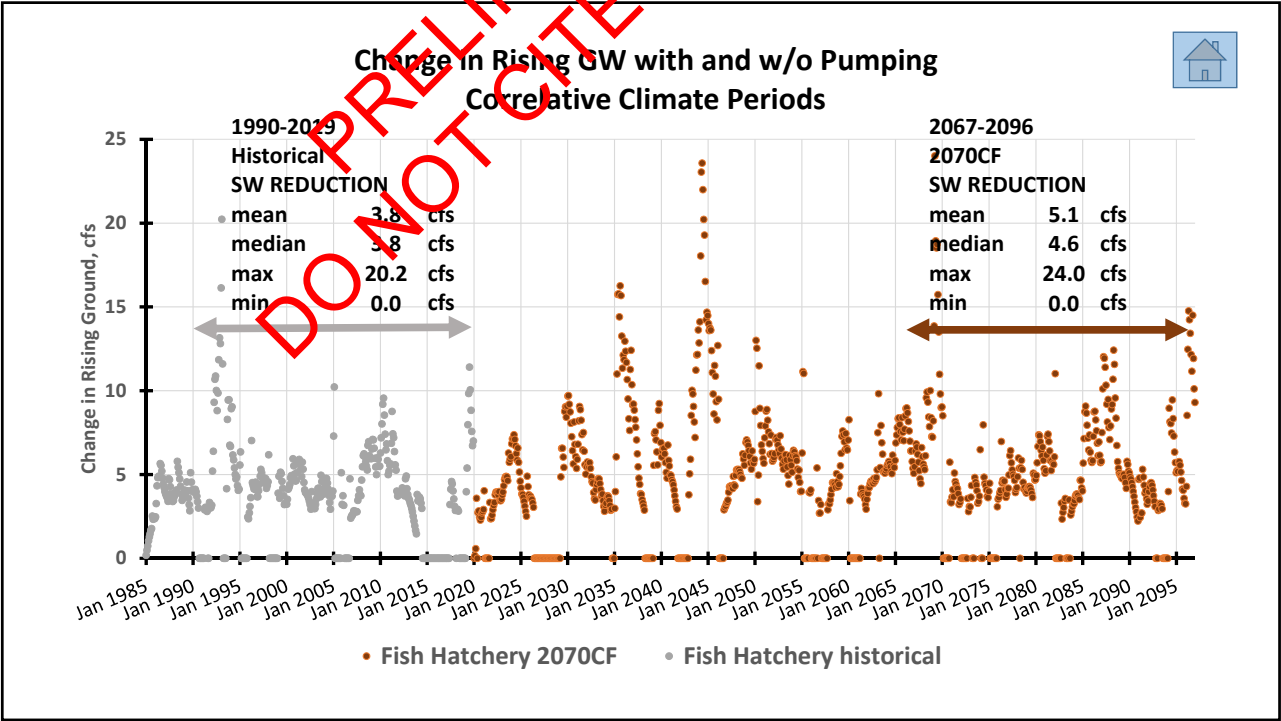
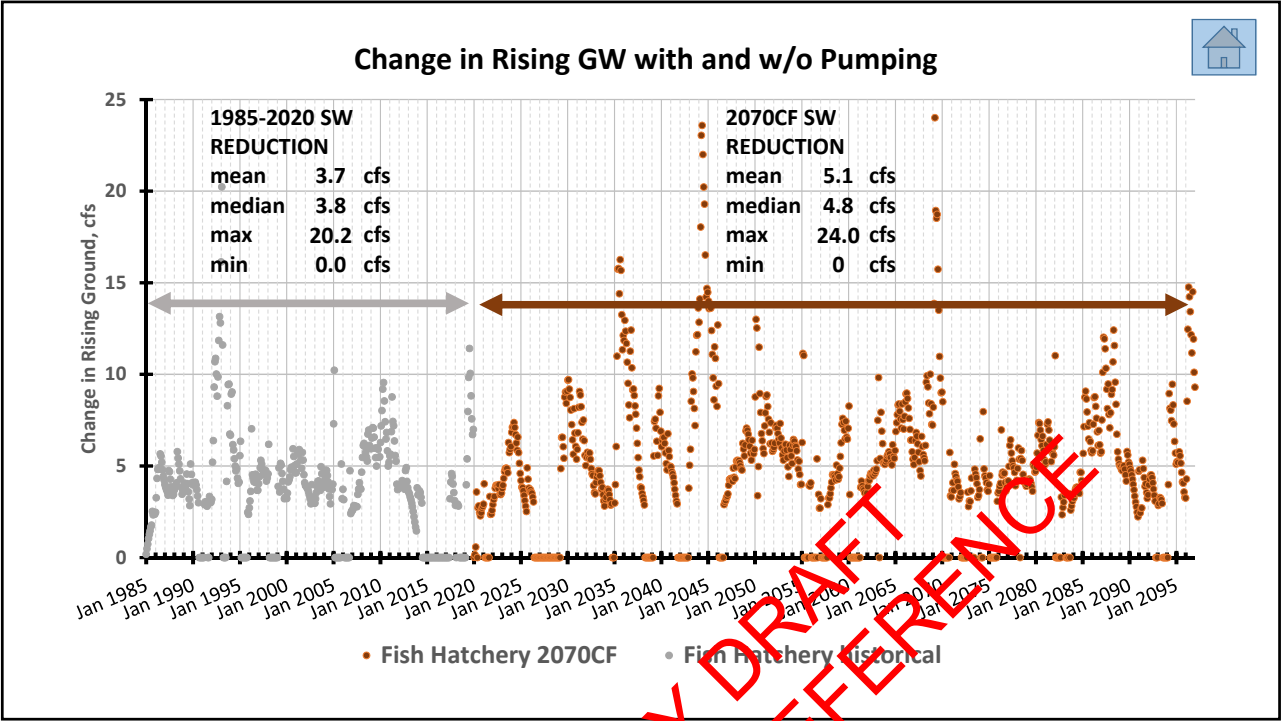
- Surface water depletion due to GW extractions on rising GW at basin boundaries
- Impacts of changes in rising GW quantities/rates on **beneficial uses and users**
 - No known surface water diversions for use as DOM, MUNI, IRRIG supplies
 - No REC uses
 - GDEs exist in area of rising GW

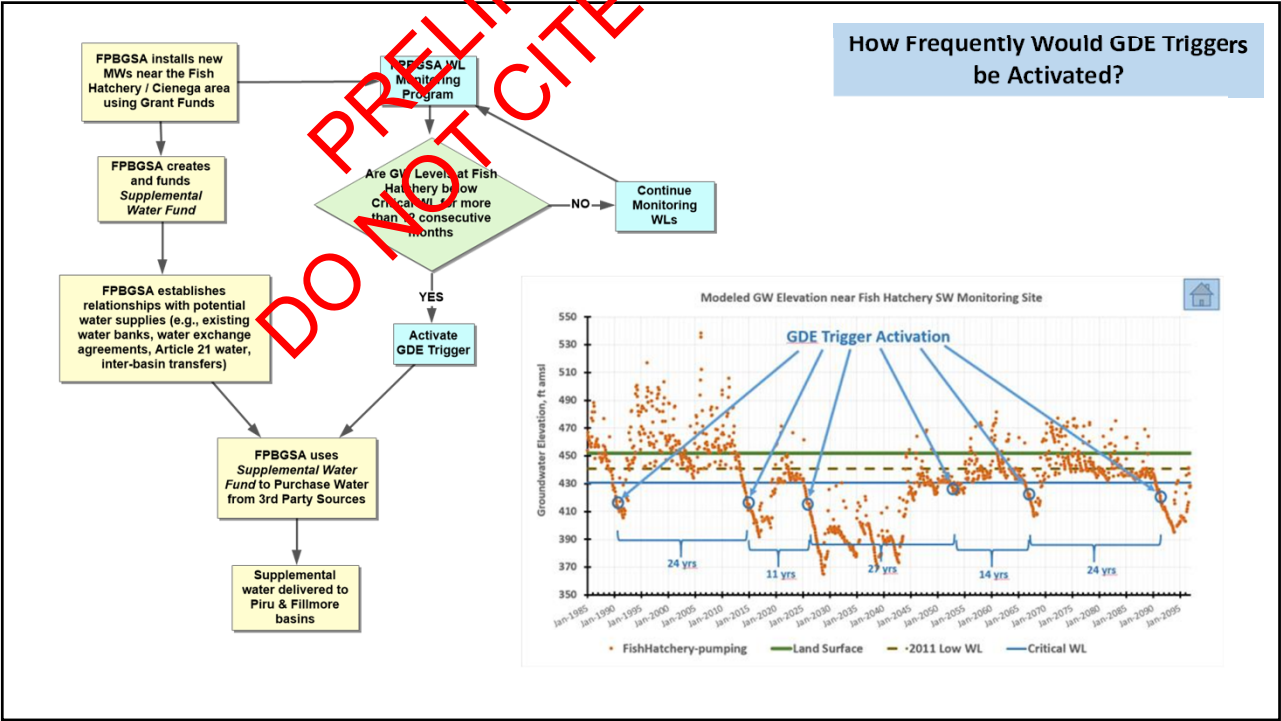
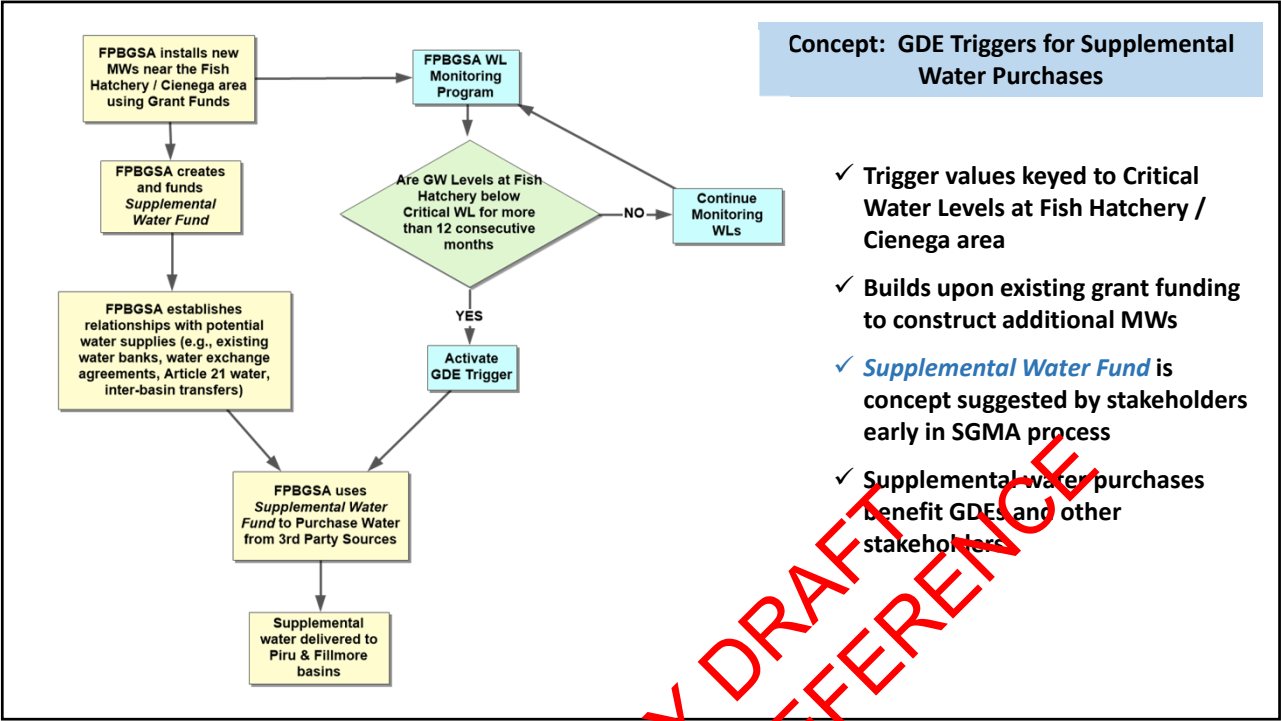
Surface Water - Groundwater Interaction

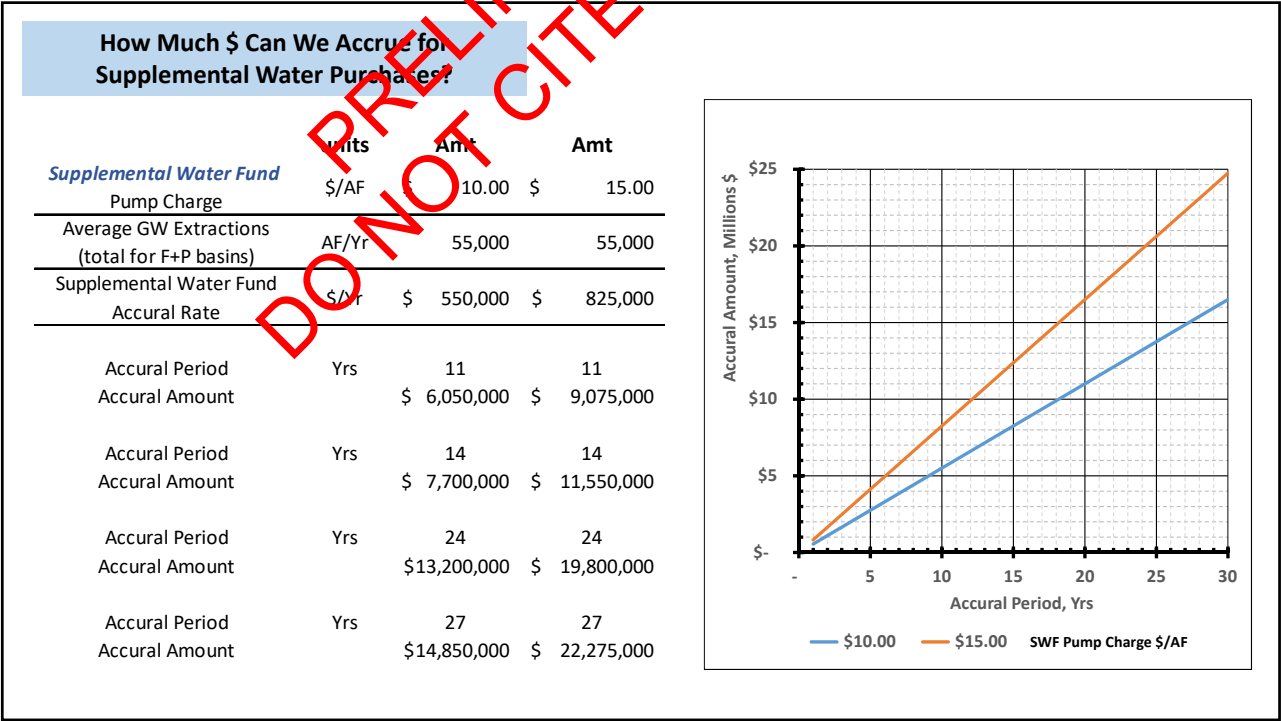
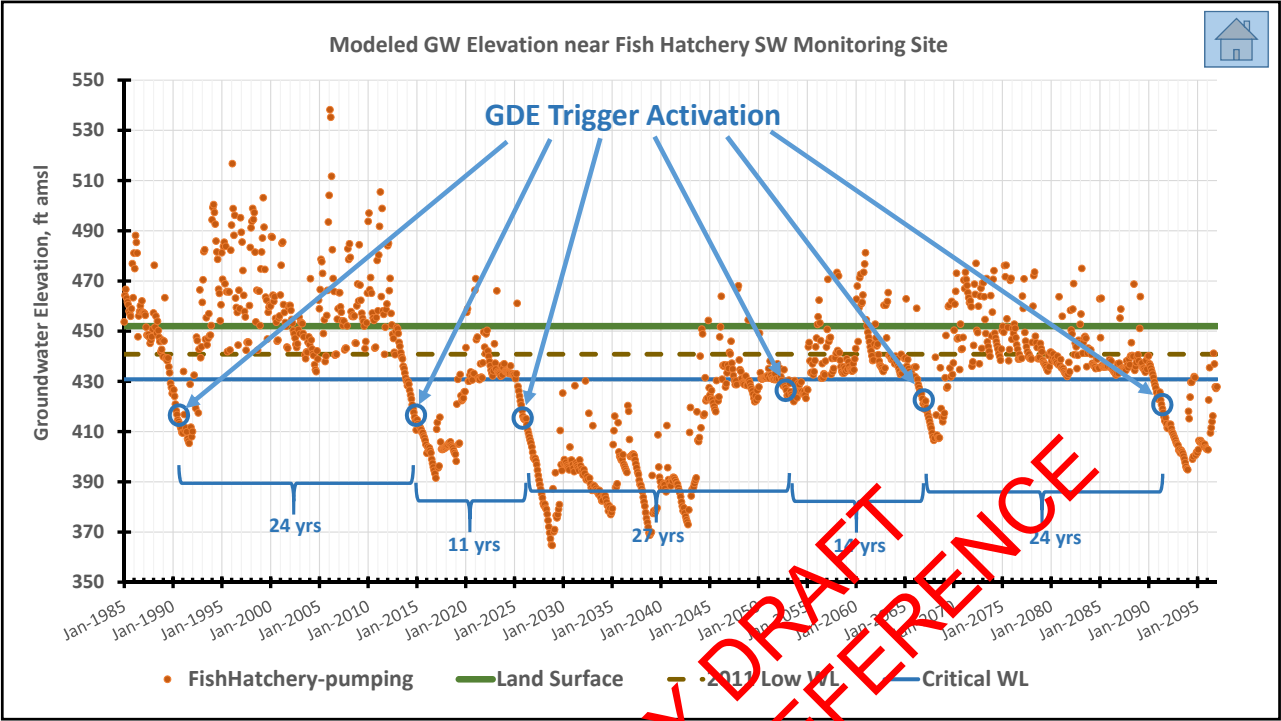


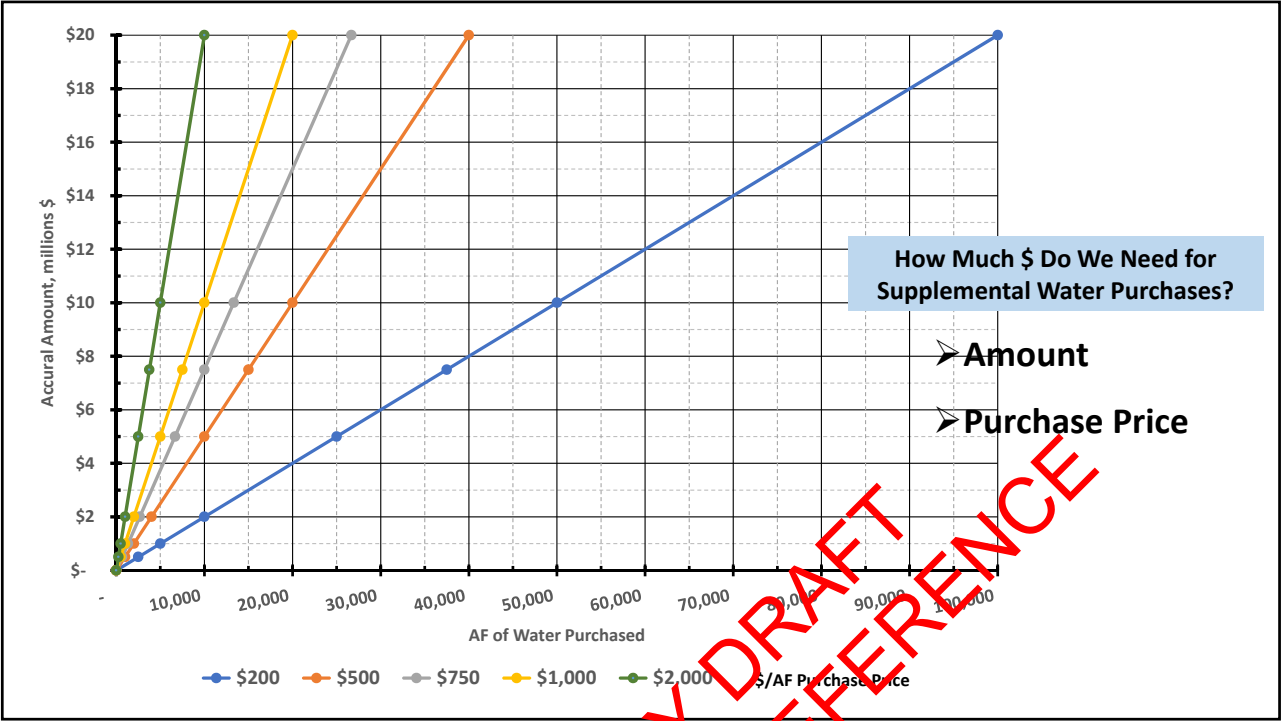
- If there are no beneficial DOM, MUNI, IRRIG, or REC uses or users, then MTs cannot be defined to avoid impacts to those uses or users
- GDEs are uses/users of the rising GW
- Generalized, relative sensitivities to rising GW availability:
 - Fish / Amphibians / Birds / Vegetation











PRELIMINARY DRAFT
DO NOT CITE OR REFERENCE